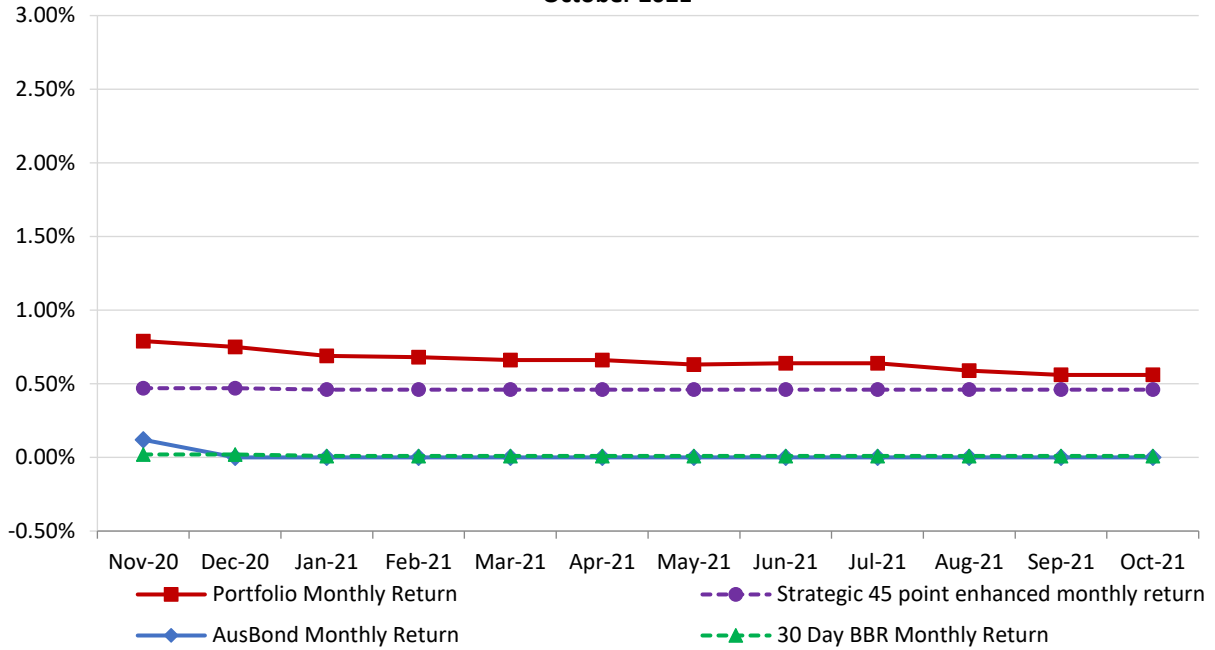


Attachment B

**Investment Performance as at 31 October
2021**

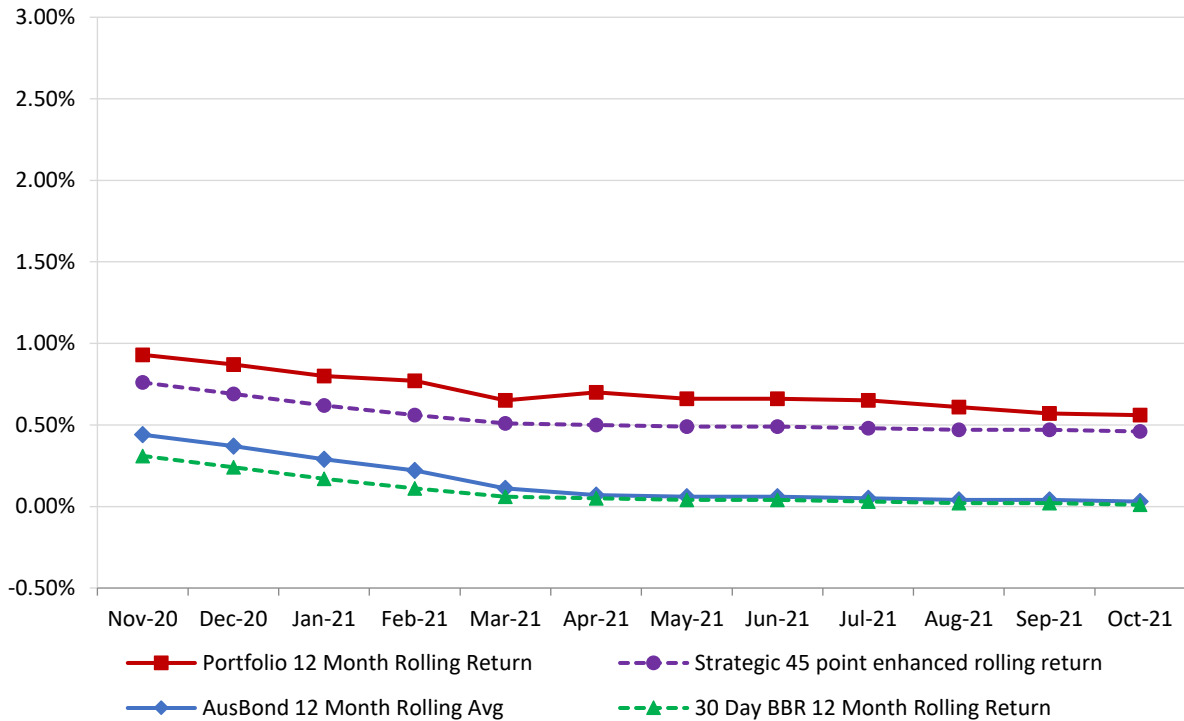
Monthly Results

**Actual Portfolio vs Strategic Enhanced Benchmark vs AusBond Benchmark vs 30 Day BBR Benchmark
October 2021**

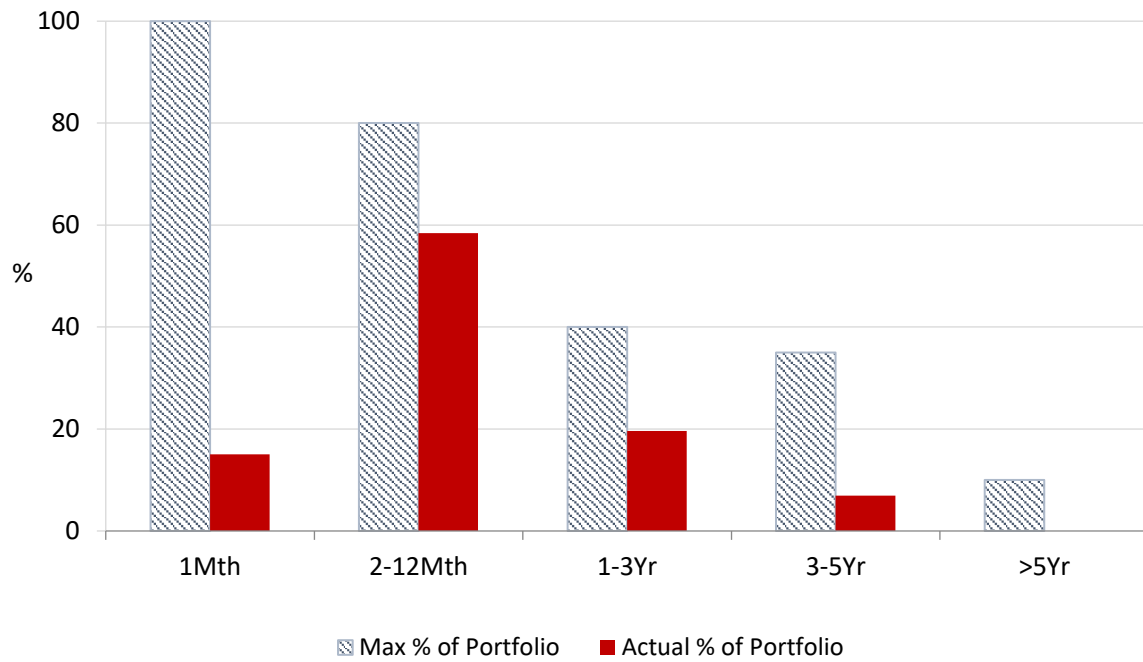


12 Month Rolling Averages

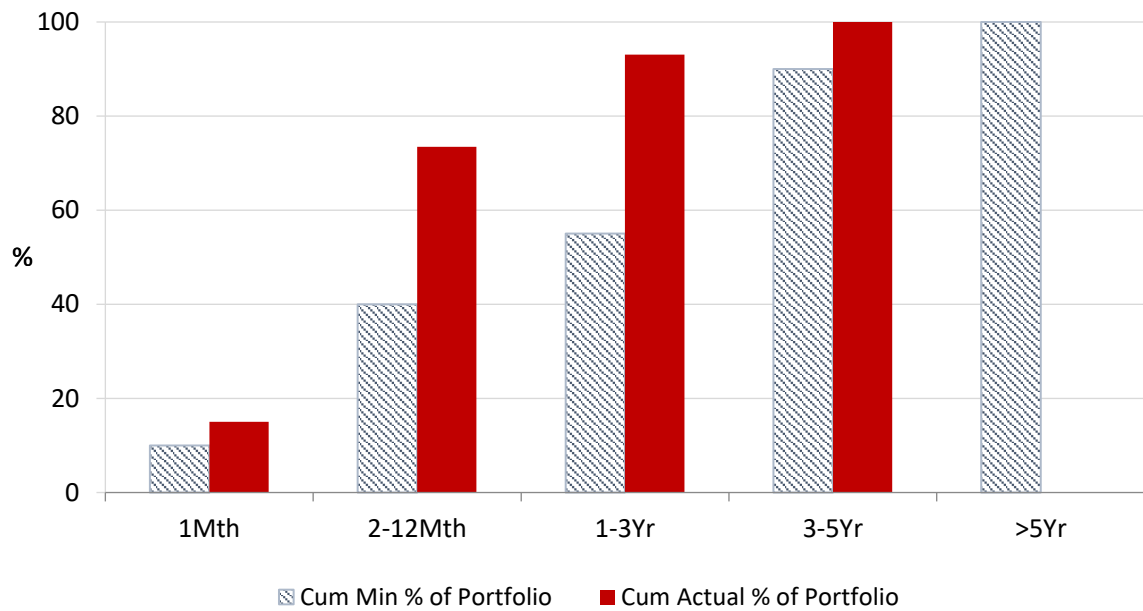
**Actual Portfolio vs Strategic Enhanced Benchmark vs AusBond Benchmark vs 30 Day BBR Benchmark
October 2021**



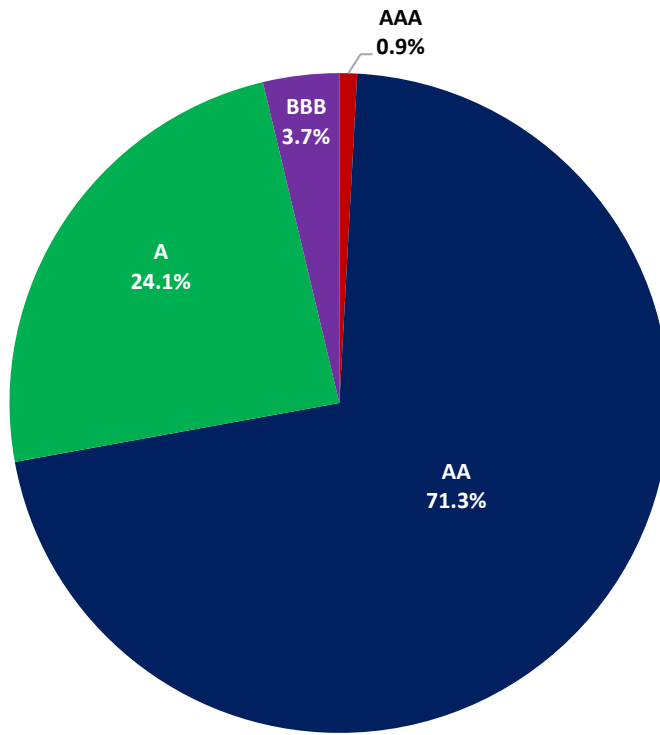
Portfolio Liquidity - Maximum Allowances as at 31 October 2021



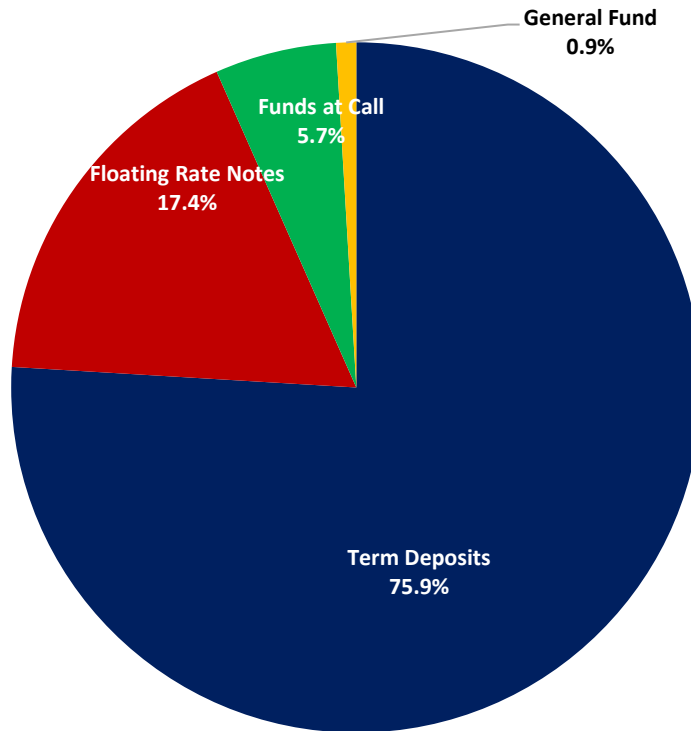
Portfolio Liquidity - Minimum Allocations as at 31 October 2021



Risk Profile as at 31 October 2021



Investment Product Profile as at 31 October 2021

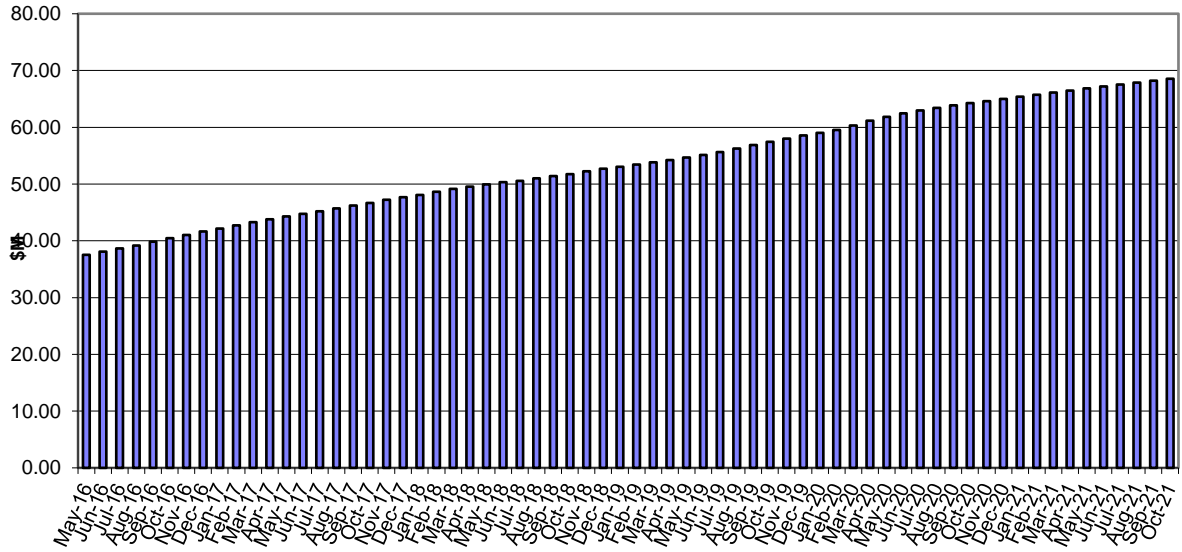


INVESTMENT AND CASH DISTRIBUTION BY FINANCIAL INSTITUTION

as at 31 October 2021

Institution Category	Financial Institution	Amount \$M	Financial Inst. %	Institution Cat. %
Australian Big 4 Bank (and related institutions)	ANZ Bank	18.0	2.6	
	Commonwealth Bank	218.3	30.9	
	National Aust Bank	70.7	10.0	
	Westpac Banking Corporation	190.6	27.0	
Big 4 Total		497.6		70.5
Other Australian ADIs and Australian subsidiaries of foreign institutions	Bank Australia Limited	5.0	0.7	
	Bank of China	4.5	0.6	
	Bank of Queensland	42.0	6.0	
	Bendigo & Adelaide Bank	40.0	5.7	
	Great Southern Bank (formerly Credit Union Australia)	4.3	0.6	
	IMB	10.0	1.4	
	ME Bank	16.0	2.3	
	Suncorp Bank	18.4	2.6	
	Macquarie Bank Ltd	52.9	7.5	
	Northern Territory Treasury Corporation	10.0	1.4	
Newcastle Permanent Building Society	5.0	0.7		
Other ADI Total		208.1		29.5
Grand Total		705.7	100.0	100.0

Cumulative Outperformance over AusBond Benchmark - 2015-2021



Cumulative Outperformance over 30 Day BBR Benchmark - 2015-2021

